



KINTEK SOLUTION

High Purity Graphite Crucible Catalog

Contact us for more catalogs of [Sample Preparation](#), [Thermal Equipment](#), [Lab Consumables & Materials](#), [Bio-Chem Equipment](#), etc...

KINTEK SOLUTION

COMPANY PROFILE

>>> About Us

Kintek Solution Ltd is one technology orientated organization, team members are devoted to probing the most efficient and reliable technology and innovations in the scientific researching equipment, fields like biochemical reacting, new materials researching, heat treatment, vacuum creating, refrigerating, as well as pharmaceutical and petroleum extracting equipment.

In the past 20 years, we earned rich experiences in this researching equipment field, we are capable to supply both the equipment and solution according to customer's needs and realities, we have also developed lots of customer tailored equipment according to a specific working purpose, and we have lots of successful projects in many universities and institutes from different countries, like Asia, Europe, North and South America, Australia and New Zealand, Middle East, and Africa.

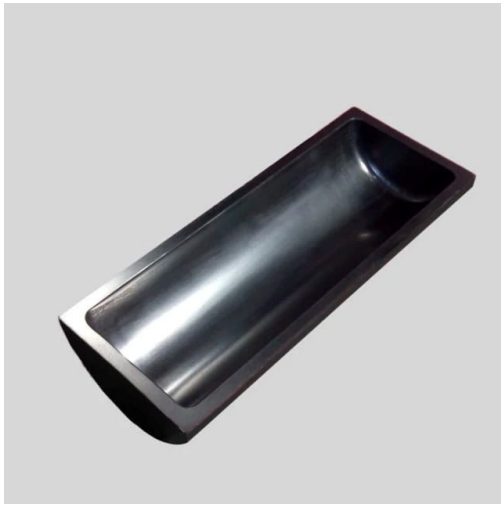
Profession, quick response, hard working, and sincerity is a remarkable label of our team members working attitude, which earn us a sound reputation among our clients.

We are here and ready to service our clients from different countries and regions, and share the most efficient and reliable technology together!



Carbon Graphite Boat -Laboratory Tube Furnace With Cover

Item Number: KM-D10



Introduction

Covered Carbon Graphite Boat Laboratory Tube Furnaces are specialized vessels or vessels made of graphite material designed to withstand extreme high temperatures and chemically aggressive environments.

[Learn More](#)

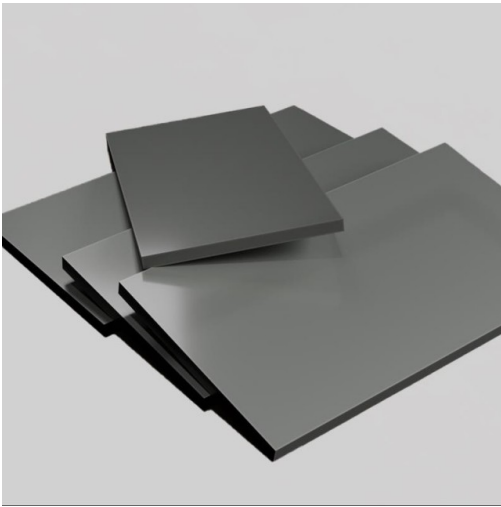
diameter / height / length / thickness

35*18*100*3.5mm

45*150*23*5mm

Carbon Graphite Plate - Isostatic

Item Number: KM-D11



Introduction

[Learn More](#)

thickness / width / length

1-50*100*100mm



Kintek Solution

Head Quarter: No.89 Science Avenue, High-Tech Zone,
Zhengzhou, China

Hongkong Office: 300 Lockhart Road, Wan Chai,
Hongkong

Canada Office: Boulevard Graham, Mont-Royal, QC, H3P
2C7, Canada

