



KINTEK SOLUTION

Advanced Ceramics Catalog

Contact us for more catalogs of **Sample Preparation, Thermal Equipment, Lab Consumables & Materials, Bio-Chem Equipment, etc...**

KINTEK SOLUTION

COMPANY PROFILE

>>> About Us

Kintek Solution Ltd is one technology orientated organization, team members are devoted to probing the most efficient and reliable technology and innovations in the scientific researching equipment, fields like biochemical reacting, new materials researching, heat treatment, vacuum creating, refrigerating, as well as pharmaceutical and petroleum extracting equipment.

In the past 20 years, we earned rich experiences in this researching equipment field, we are capable to supply both the equipment and solution according to customer's needs and realities, we have also developed lots of customer tailored equipment according to a specific working purpose, and we have lots of successful projects in many universities and institutes from different countries, like Asia, Europe, North and South America, Australia and New Zealand, Middle East, and Africa.

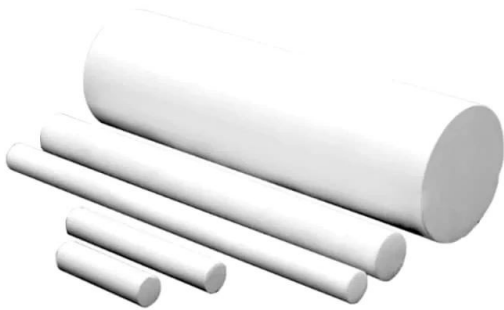
Profession, quick response, hard working, and sincerity is a remarkable label of our team members working attitude, which earn us a sound reputation among our clients.

We are here and ready to service our clients from different countries and regions, and share the most efficient and reliable technology together!



Boron Nitride (Bn) Ceramic Rod

Item Number: KM-D4



Introduction

Boron nitride (BN) rod is the strongest boron nitride crystal form like graphite, which has excellent electrical insulation, chemical stability and dielectric properties.

[Learn More](#)

diameter and length

10-100mm*100-300mm

Hexagonal Boron Nitride (Hbn) Ceramic Ring

Item Number: KM-D6



Introduction

Boron nitride ceramic (BN) rings are commonly used in high temperature applications such as furnace fixtures, heat exchangers and semiconductor processing.

[Learn More](#)

Boron Nitride (Bn) Ceramic Plate

Item Number: KM-D7



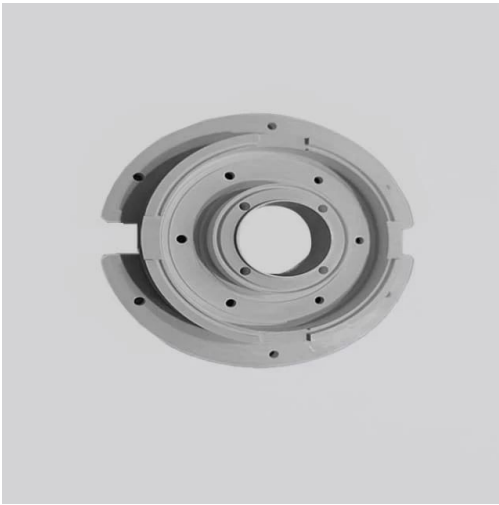
Introduction

Boron nitride (BN) ceramic plates do not use aluminum water to wet, and can provide comprehensive protection for the surface of materials that directly contact molten aluminum, magnesium, zinc alloys and their slag.

[Learn More](#)

Boron Nitride (Bn) Ceramic Custom Parts

Item Number: KM-D8



Introduction

Boron nitride (BN) ceramics can have different shapes, so they can be manufactured to generate high temperature, high pressure, insulation and heat dissipation to avoid neutron radiation.

[Learn More](#)

Alumina (Al₂O₃) Ceramic Crucible For Laboratory Muffle Furnace

Item Number: KM-C01



Introduction

Alumina ceramic crucibles are used in some materials and metal melting tools, and flat-bottomed crucibles are suitable for melting and processing larger batches of materials with better stability and uniformity.

[Learn More](#)

0.9ml(45x8x6mm)	9ml(60x30x10mm)	30ml(60x40x20mm)	185ml(80x80x40mm)	13ml(100x30x10mm)	300ml(100x100x40mm)	510ml(120x120x50mm)
2ml(30x20x10mm)	10ml(50x20x20mm)	35ml(60x30x30mm)	75ml(90x60x20mm)	25ml(100x30x15mm)	750ml(100x100x100mm)	520ml(140x140x38mm)
3ml(25x15x15mm)	10ml(60x30x14mm)	40ml(50x50x25mm)	165ml(90x60x40mm)	35ml(100x30x20mm)	330ml(115x115x35mm)	425ml(150x150x30mm)
3.5ml(20x20x17mm)	16ml(60x30x15mm)	57ml(75x75x15mm)	200ml(90x60x45mm)	59ml(100x30x30mm)	90ml(120x60x20mm)	750ml(150x150x50mm)
4ml(50x20x10mm)	20ml(60x30x20mm)	68ml(65x65x25mm)	170ml(90x90x30mm)	47ml(100x40x20mm)	190ml(120x60x40mm)	1290ml(150x150x80mm)
5ml(30x20x17mm)	25ml(50x40x20mm)	100ml(65x65x35mm)	300ml(90x90x45mm)	110ml(100x50x30mm)	205ml(120x80x30mm)	800ml(160x160x45mm)
7ml(50x20x15mm)	26ml(50x25x35mm)	110ml(70x70x30mm)	22ml(100x20x20mm)	150ml(100x100x25mm)	260ml(120x80x40mm)	1460ml(180x180x60mm)
3.5ml(20x20x17mm)	10ml(60x30x14mm)	25ml(100x30x20mm)	125ml(98x72x28mm)			
5.5ml(45x22x13mm)	15ml(30x30x30mm)	30ml(80x40x17mm)	1800ml(380x135x60mm)			
9ml(60x25x15mm)	15ml(60x30x15mm)	50ml(90x60x17mm)				
10ml(50x28x14mm)	22ml(100x25x15mm)	84ml(120x60x18mm)				
9ml(60x25x15mm)	50ml(85x30x40mm)	125ml(98x72x28mm)	1050ml(150x150x60mm)	1800ml(380x135x60mm)		
15ml(60x30x15mm)	84ml(120x60x18mm)	460ml(160x120x35mm)	1290ml(150x150x80mm)	4000ml(225x225x100mm)		
15ml(30x30x30mm)	95ml(120x100x15mm)	710ml(155x120x50mm)	1800ml(150x100x150mm)			
22ml(100x25x15mm)	100ml(100x50x30mm)	900ml(120x120x100mm)	4400ml(200x150x200mm)			
0.9ml(45x8x6mm)	59ml(100x30x30mm)	260ml(100x100x35mm)	1880ml(340x220x35mm)	6900ml(330x330x80mm)		
3ml(25x15x15mm)	84ml(65x65x30mm)	425ml(150x150x30mm)	3120ml(300x150x90mm)	14L(330x330x160mm)		
5ml(30x20x17mm)	170ml(170x53x30mm)	445ml(100x100x60mm)	3300ml(200x200x100mm)			
16ml(40x30x20mm)	200ml(115x90x30mm)	1090ml(140x140x70mm)	3760ml(300x200x80mm)			
35ml(70x30x30mm)	230ml(115x65x45mm)	1260ml(160x120x85mm)	4000ml(235x165x130mm)			
One big (50x40x20) and two small (30x20x17)	One large (90x65x30) four small (50x20x20)	One large (100x30x20) four small (20x20x17)	One large (115x90x30) five small (75x20x20)	One big (120x60x20) and two small (50x40x20)		

One big (80x80x40) and two small (60x30x30)	One big (90x65x30) and two small (50x40x20)	One large (100x30x20) and three small (30x20x17)	One large (115x115x35) and three small (100x30x20)	One big (120x60x20) and two small (100x20x20)
One Big (90x60x20) Four small (50x20x20)	One Large (90x65x30) and three small (52x25x23)	One Large (100x40x20) and three small (φ28x17)	One big (120x30x15) five small (20x20x17)	One big (120x60x20) five small (50x20x20)
One large (90x60x17) and three small (50x28x1)	One large (100x30x15) and three small (30x20x10)	One Large (100x40x20) and three small (φ30x30)	One large (115x115x35) and three small (100x30x20)	One large (120x60x40) and three small (40x35x25)
One big (90x60x20) and two small (50x40x20)	One big (100x30x20) five small (φ18x26)	One large (100x100x40) nine small (10ml)	One large (120x35x18) seven small (25x15x15)	One large (120x80x30) six small (20ml)
One big (90x60x20) five small (80x10x10)	One large (100x30x20) and four small (φ20x20)	One Large (115x65x45) and four small (50x25x35)	One large (120x60x18) and four small (50x28x14)	One large (120x80x40) six small (15ml)

One large (φ58x60) and seven small (φ16x50)	One large (100x40x20) and three small (φ28x17)	One large (120x60x20) two small (100x20x20 semicircle)
One large (φ70x70) and three small (φ28x58)	One large (100x40x20) and three small (φ30x30)	One large (120x60x40) and three small (40x35x25 semicircle)
One large (100x30x20) and four small (φ20x20)	One large (100x100x40) nine small (10ml regular)	One large (120x80x40) six small (15ml)
One big (100x30x20) five small (φ18x26)	One large (115x65x45) four small (50x25x35)	One large (120x80x30) six small (20ml heightened)

2ml(50x10x10mm)	7ml(50x20x15mm)	68ml(65x65x25mm)	110ml(100x50x30mm)	165ml(90x60x40mm)	1000ml(150x110x80)
2.5ml(70x12x7mm)	15ml(75x20x20mm)	75ml(90x60x20mm)	115ml(65x65x35mm)	170ml(90x90x30mm)	2000ml(160x140x120mm)
4ml(50x20x10mm)	34ml(150x20x20mm)	85ml(120x60x18mm)	120ml(90x65x30mm)	185ml(80x80x40mm)	2600ml(200x200x80mm)
4.5ml (80x10x10mm)	57ml(75x75x15mm)	80ml(120x60x18mm)	135ml(95x68x28mm)	185ml(94x68x38mm)	4800ml(250x250x100mm)
7ml(50x25x10mm)	63ml(150x45x20mm)	90ml(120x60x20mm)	160ml(78x28x107)	520ml(140x140x38mm)	

1.5ml with holes (30x10x9.5mm)	60ml(100x43x26mm)
19ml(100x24x17)	114ml(100x56x35mm)
24ml(73x30x22mm)	175ml(100x84x35mm)
36ml(100x27x27mm)	Other specifications can be customized

0.9ml with lid (45x8x6mm)	26ml with lid (50x25x35mm)	80ml with lid (120x60x18mm)	150ml with lid (100x100x25mm)	330ml with lid (115x115x35mm)	520ml with lid (140x140x38mm)
3ml with lid (25x15x15mm)	40ml with lid (50x50x25mm)	84ml with lid (65x65x30mm)	160ml with lid (78x28x107mm)	370ml with lid (200x100x25mm)	750ml with lid (150x150x50mm)
4ml with lid (50x20x10mm)	59ml with lid (100x30x30mm)	100ml with lid (65x65x35mm)	170ml with lid (90x90x30mm)	425ml with lid (150x150x30mm)	800ml with lid (200x100x50mm)
7ml with lid (50x20x15mm)	60ml with lid (105x105x12mm)	100ml with lid (100x50x30mm)	260ml with lid (100x100x35mm)	445ml with lid (100x100x60mm)	900ml with lid (120x120x100mm)
7ml with lid (50x25x10mm)	68ml with lid (65x65x25mm)	110ml with lid (70x70x30mm)	310ml with lid (105x105x40mm)	510ml with lid (120x120x50mm)	
4ml(50x20x10mm)	26ml(50x25x35mm)	195ml(85x80x40mm)	800ml(200x100x50mm)	3100ml(220x220x80mm)	
5.5ml(100x10x10mm)	30ml(60x40x20mm)	200ml(90x60x45mm)	1100ml(305x90x60mm)	298ml(200x100x30mm)	
10ml(75x18x14mm)	35ml(120x30x15mm)	205ml(120x80x30mm)	1480ml(200x200x50mm)		
16ml(60x30x15mm)	150ml(100x100x25mm)	210ml(85x85x40mm)	2400ml(250x155x80mm)		

20ml(52x25x23mm)	190ml(120x60x40mm)	370ml(200x100x25mm)	2830ml(300x180x70mm)
1050ml with lid (150x150x60mm)	1460ml with lid 180x180x60	2600ml with lid 200x200x80	6900ml with lid (330x330x80mm)
1090ml with lid (140x140x70mm)	1480ml with lid 200x200x50	4400ml with cover (200x150x200mm)	11000ml with cover 330x330x120
1290ml with lid (150x150x80mm)	2830ml with cover 300x180x70	4800ml with cover (250x250x100mm)	14L with cover (330x330x160mm)
4ml with lid 20x20x18mm	3.5ml with lid 20x20x17mm		
800ml(130x120x75mm)	1300ml(130x120x115mm)		

Alumina Ceramic Sagger - Fine Corundum

Item Number: KM-C05



Introduction

Alumina sagger products have the characteristics of high temperature resistance, good thermal shock stability, small expansion coefficient, anti-stripping, and good anti-powdering performance.

[Learn More](#)

fine striped sagger	100x100x13mm95	105x105x12mm99
fine striped sagger	103x103x22mm	118x100x19mm
fine striped sagger	120x120x40mm	195x100x32mm
Fine corundum burning table	100x100x15mm95 aluminum oxide - notched	105x105x12mm99 aluminum oxide - notched
Fine corundum burning table	250*250mm	

Alumina (Al₂O₃) Furnace Tube - High Temperature

Item Number: KM-C06



Introduction

High temperature alumina furnace tube combines the advantages of high hardness of alumina, good chemical inertness and steel, and has excellent wear resistance, thermal shock resistance and mechanical shock resistance.

[Learn More](#)

outer 4mm inner 2mm (1 meter)	outer 12mm inner 8mm (1 meter)	outer 25mm inner 19mm (1 meter)	outer 45mm inner 36mm (1 meter)	outer 70mm inner 60mm (1 meter)
outer 5mm inner 3mm (1 meter)	outside 16mm inside 11mm (1 meter)	outside 30mm inside 24mm (1 meter)	outside 50mm inside 40mm (1 meter)	outer 80mm inner 70mm (1 meter)
outer 6mm inner 4mm (1 meter)	outer 18mm inner 13mm (1 meter)	outer 32mm inner 26mm (1 meter)	outer 55mm inner 45mm (1 meter)	outside 90mm inside 80mm (1 meter)
outer 8mm inner 5mm (1 meter)	outside 20mm inside 15mm (1 meter)	outer 35mm inner 28mm (1 meter)	outside 60mm inside 50mm (1 meter)	90mm outside 100mm inside (1 meter)
outside 10mm inside 6mm (1 meter)	outer 22mm inner 16mm (1 meter)	outer 40mm inner 32mm (1 meter)	outer 65mm inner 55mm (1 meter)	

Aluminum Oxide (Al₂O₃) Protective Tube - High Temperature

Item Number: KM-C07



Introduction

Alumina oxide protective tube, also known as high temperature resistant corundum tube or thermocouple protection tube, is a ceramic tube mainly made of alumina (aluminum oxide).

[Learn More](#)

Φ1*Φ0.3mm (double holes)	Φ3*Φ0.7mm (double holes)	Φ2*0.4mm (four holes)
Φ1.5*Φ0.5mm (double hole)	Φ5*Φ1.5mm (double holes)	Φ4*Φ1mm (four holes)
Φ2*Φ0.5mm (double hole)	Φ5.5*Φ1.5mm (double holes)	Φ5*Φ1.2mm (four holes)
Φ2.5*Φ0.7mm (double holes)	Φ8*Φ2mm (double holes)	Φ8*Φ2mm (four holes)

Φ1*0.3mm	Φ2*0.3mm	Φ3*0.7mm	Φ4*1.5mm	Φ5.5*1.5mm	Φ8*2mm
Φ1.2*0.3mm	Φ2*0.5mm	Φ3.5*0.8mm	Φ4.5*1.2mm	Φ6*1.8mm	Φ8*2.4mm
Φ1.4*0.4mm	Φ2*0.6mm	Φ3.5*1mm	Φ5*1.2mm	Φ6.5*1.8mm	Φ10*2.7mm
Φ1.5*0.4mm	Φ2.5*0.7mm	Φ4*1.2mm	Φ5*1.5mm	Φ6.5*2mm	Φ7*2mm

Alumina (Al₂O₃) Plate-High Temperature And Wear-Resistant Insulating

Item Number: KM-C08



Introduction

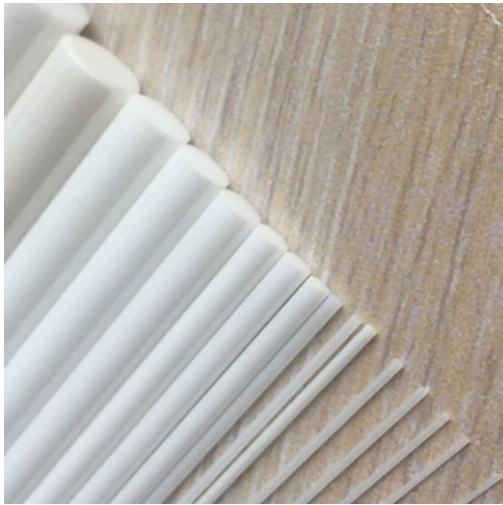
High temperature wear-resistant insulating alumina plate has excellent insulation performance and high temperature resistance.

[Learn More](#)

10x10x1mm	130x32x10mm	140x85x10mm	150x150x8mm
100x100x4mm	133x133x6mm	150x100x10mm	150x150x10mm
100x100x10mm	135x30x10mm	150x140x8mm	160x160x8mm
115x70x10mm	135x135x5mm	150x150x6mm	250x250x10mm

Alumina (Al₂O₃) Ceramic Rod-Insulated

Item Number: KM-C09



Introduction

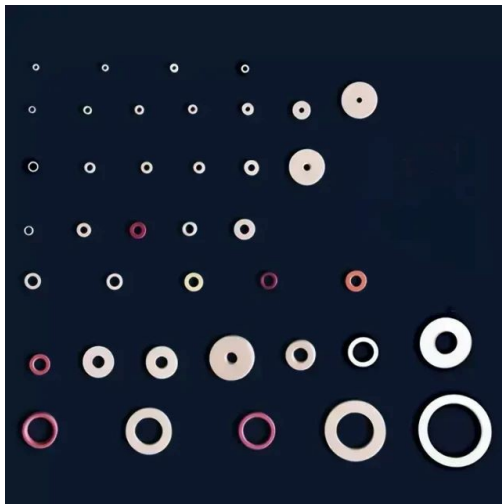
Insulated alumina rod is a fine ceramic material. Alumina rods have excellent electrical insulating properties, high chemical resistance and low thermal expansion.

[Learn More](#)

0.4*100mm	0.9*100mm	3.2*100mm	6*100mm	13*114mm	18*86mm	40*100mm	8*300mm	24*400mm
0.5*100mm	1*100mm	3.5*100mm	7*100mm	14*114mm	18*100mm	50*100mm	10*300mm	30*400mm
0.6*100mm	2*100mm	4*100mm	8*100mm	15*100mm	20*100mm	60*100mm	12*300mm	
0.8*100mm	2*150mm	4.5*90mm	9*100mm	16*100mm	25*100mm	4*300mm	15*300mm	
0.7*100mm	2.5*100mm	4.75*100mm	10*100mm	15*100mm	30*100mm	5*300mm	16*300mm	
0.8*100mm	3*100mm	5*100mm	12*100mm	16*100mm	35*100mm	6*300mm	20*300mm	

Aluminium Oxide (Al₂O₃) Ceramic Washer - Wear-Resistant

Item Number: KM-C10



Introduction

Alumina wear-resistant ceramic washer are used for heat dissipation, which can replace aluminum heat sinks, with high temperature resistance and high thermal conductivity.

[Learn More](#)

Inner 1 outer 7 thick 1.6	4 inside, 8 outside, 4 thick	Inner 6.5 outer 15.5 thick 10	Inner 8 outer 18 thick 8.5	Inner 9.2 outer 14.5 thick 3.5	Inner 13 outer 21 thick 5
Inner 1.6 outer 6 thick 1.5	Inner 4 outer 10 thick 2/3/5	Inner 7 outer 10 thick 3	Inner 8 outer 20 thick 2.5/4	Inside 9.2 outside 14.5 thick 4	Inner 14.3 outer 21.2 thick 2
Inside 2 outside 4 thick 1	Inner 5 outer 10 thick 2.5	Inner 7 outer 14 thick 2.7	Inner 8.2 outer 25 thick 3/5	Inside 9.5 outside 18 thick 3	Inner 14 outer 42 thick 5.5
Inner 2 outer 16 thick 4.5	Inner 5 outer 10 thick 2/3	Inner 7 outer 25 thick 5	Inside 8.5 outside 16 thick 3	Inside 9 outside 31 thick 10	Inside 15.5 outside 27 thick 3.5
Inside 3 outside 6 thick 1	Inner 5 outer 17.8 thick 10	Inner 7.2 outer 15.5 thick 2.1/2.4	Inner 8.6 outer 14 thick 1/1.5	Inner 10 outer 25 thick 3/5	Inner 16 outer 23 thick 0.8
Inner 3 outer 6 thick 1.5	Inner 5.5 outer 14 thick 3/5	Inner 8 outer 12 thick 4	Inner 8.6 outer 14 thick 2/3/4	Inside 10 outside 27 thick 0.6	Inner 16 outer 23 thick 2.5/4
Inner 3 outer 6 thick 2/3/5	Inside 5.5 outside 14 thick 3/10	Inner 8.1 outer 13 thick 3	Inner 8.6 outer 14 thick 5	Inside 10 outside 36.5 thick 5	Inner 16 outer 23 thick 5/7.7
Inner 3 outer 10 thick 1.5/2/3/5	Inner 6 outer 12 thick 2	Inner 8 outer 13 thick 4	Inside 9 outside 31 thick 5	Inner 10 outer 50 thick 5	Inner 16.5 outer 37 thick 5/10
Inner 3.2 outer 7.8 thick 3.8	Inner 6 outer 12 thick 3/4/5	Inner 8 outer 15 thick 1	Inner 9.2 outer 14.5 thick 2	Inner 10.5 outer 18 thick 2	Inner 17 outer 40 thick 3.5
Inner 4 outer 6 thick 1	Inside 6.5 outside 10 thick 4	Inner 8 outer 17 thick 8.5	Inner 9.2 outer 14.5 thick 2.5	Inner 12.5 outer 25.5 thick 3	Inner 23 outer 39 thick 3.5/5/10
Inner 4 outer 7 thick 2.5	Inner 6.5 outer 14 thick 2/4	Inner 8 outer 18 thick 2	Inner 9.2 outer 14.5 thick 3	Inner 12.5 outer 25.5 thick 5	Inner 31 outer 50.5 thick 3.5

Alumina Ceramic Screw - High Quality Insulation And High Temperature Resistance

Item Number: KM-C011



Introduction

Alumina ceramic screws are fastening components made of 99.5% alumina, ideal for extreme applications requiring excellent thermal resistance, electrical insulation and chemical resistance.

[Learn More](#)

M16	External hexagon	100*9.2*24.2	7.*9.2*24.2	40*9.2*24.2	
M14	External hexagon	80*10*22	50*7.6*21.9	40*9.9*21	
M12	External hexagon	75*8.1*18.8	50*10.3*18.3	25*10.3*18.4	15*10*21.2
	Inner hexagon	50*10.5*17.2	35/25*10.4*17.1	15*12.2*18.1	14*12.2*18
M10	External hexagon	70*7*16.8	35*6.6*16.6		
	Inner hexagon	50*9*14.8	35*9.1*14.8		
M8	Inner hexagon	70*5.6*14	50*4.5*11.7	35*5.3*12.9	25*5.3*12.9
	Inner hexagon	50*7.6*12.3	35*7.9*12.3		
	Flat head inner hexagon	30*.*13.8			
	"+"Type	20*.*14.2			
M6	External hexagon	55*5.2*9.7	40*4.3*9.6		
	Inner hexagon	40*5.8*9.8	25*5.9*10	15*5.9*10	
	"+"Type	40*.*12			
	Outer hexagon " _ " type	25*3.9*9.8			
	Round head " _ "type with hole	20*4.8*10			
	Inner hexagon	15*.*9.8			
M5	External hexagon	25*3.5*8	20/15*3.6*8	10/12*3.6*7.6	5*3.6*8
	Inner hexagon	35*4.7*7.8	25/20*4.9*8.1	15/12*4.9*8.1	10/5*4.9*8.1
	Round head "+"type with hole	25*.*8.6	20*.*8.5	12*.*8.5	
	Round head Inner hexagon	25*2.*9.3	12*2.8*8.6		
	Round head " _ " type	10*3.4*7.9			
	"+"Type	10*.*8.9			
	Round head " _ " type with hole	6/15*3*10			
M4	External hexagon	20*3.2*6.8	15*3.3*6.8	10*3.2*6.8	
	Inner hexagon	25*4*7	20*4.1*6.9	15*4.1*6.8	10*3.2*6.8

	Inner hexagon	25*.*8.5			
	"+" Type	12*.*8.4			
	Round head "___" type	8*2.9*7	5*2.1*9.3		
	Round head "+" type with hole	3*4.5*8.9			
M3.5	"+" Type	9*.*5.3			
M3	External hexagon	10*3*5.5	30*3*5.4		
	Inner hexagon	30*3*5.4	20/25*3*5.4	15/10*3*5.4	8*3*5.4
	"+" Type	15*.*5.2	6*.*5.6		
	Round head "+" type	6.5*2.7*5.5			
M2.5	"+" Type	9*.*4.5	6*.*3.9		
M2	Flat head "___" type half teeth	22*1.4*3.8			
	Inner hexagon	14*1.9*3.8			
	Flat head "___" type	10*1.4*3.8			
	"+" thread	8*1.6*3.5			
	Round head "+" type	8*1.5*3.5			
	External hexagon	6*1.6*3.8			
	"+" Type	6*.*4.2			

Alumina (Al₂O₃) Ceramic Positioning Pin - Straight Bevel

Item Number: KM-C012



Introduction

Alumina ceramic positioning pin has the characteristics of high hardness, wear resistance and high temperature resistance.

[Learn More](#)

model	small head diameter	middle diameter	Bevel Diameter	length
M4	3.1mm	4.8mm	9.7mm	22mm
M5	4mm	5.5mm	9.6mm	22mm
M6	4.7mm	6.7mm	9.5mm	26mm
M8	6.3mm	8.5mm	12mm	26mm
M9	6.3mm	9.7mm	12.9mm	28.9mm
M10	8.3mm	10.7mm	13.6mm	24.5mm
M12	9.5mm	12.7mm	14.8mm	26.5mm
M13	10mm	13.7mm	16.8mm	32.9mm

model	small head diameter	middle diameter	Bevel Diameter	length
M4	3mm	4.7mm	7.7mm	24.3mm
M5	4mm	5.5mm	9.6mm	22mm
M6	4.8mm	6.7mm	9.9mm	26mm
M8	6.2mm	8.8mm	11.9mm	25.7mm
M10	8.3mm	10.6mm	14.2mm	26.7mm
M12	9.1mm	12.6mm	14.7mm	30.5mm
M14	12.5mm	14.8mm	15.7mm	28.7mm

Aluminum Oxide (Al₂O₃) Ceramics Heat Sink - Insulation

Item Number: KM-C013



Introduction

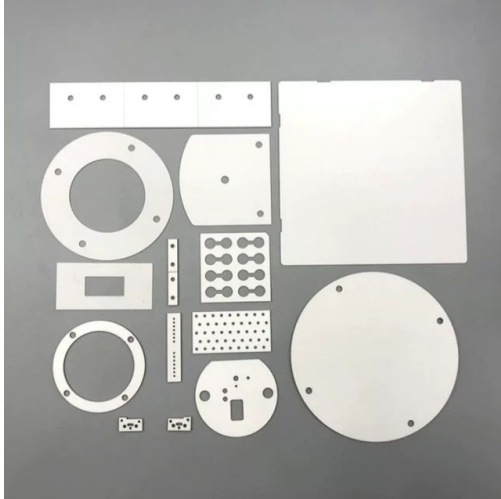
The hole structure of the ceramic heat sink increases the heat dissipation area in contact with the air, which greatly enhances the heat dissipation effect, and the heat dissipation effect is better than that of super copper and aluminum.

[Learn More](#)

1.7*3mm	10*4mm	16*1mm	20*20mm	29.5*1mm	60*1mm	100*8mm
3*3mm	10*5mm	16*4mm	20.5*1mm	30.5*1mm	57.8*6mm	107*3mm
4*2.3mm	10.5*2mm	16*5mm	22*1mm	32*5mm	70*1mm	150*5mm
6*6mm	10.5*10.5mm	17*1mm	23.5*2.5mm	35*1mm	74*1mm	200*5mm
7*3.3mm	12*1mm	18*0.63mm	25*0.5mm	40*1mm	80*1mm	
8*5mm	12*5mm	19*0.8mm	26*4mm	45*0.5mm	90*1mm	
9.5*1.3mm	14*1mm	20*1mm	26*5mm	51*1mm	100*1mm	
10*1mm	16*0.5mm	20*10mm	28*6.5mm	50*5mm	100*2mm	

Alumina Zirconia Special-Shaped Parts Processing Custom-Made Ceramic Plates

Item Number: KM-C014



Introduction

Alumina ceramics have good electrical conductivity, mechanical strength and high temperature resistance, while zirconia ceramics are known for their high strength and high toughness and are widely used.

[Learn More](#)

Boron Nitride (Bn) Ceramic Parts

Item Number: KM-P01



Introduction

Boron nitride ((BN) is a compound with high melting point, high hardness, high thermal conductivity and high electrical resistivity. Its crystal structure is similar to graphene and harder than diamond.

[Learn More](#)

Zirconia Ceramic Plate - Yttria Stabilized Precision Machined

Item Number: KM-G02



Introduction

Yttrium-stabilized zirconia has the characteristics of high hardness and high temperature resistance, and has become an important material in the field of refractories and special ceramics.

[Learn More](#)

Zirconia Ceramic Rod - Stabilized Yttrium Precision Machining

Item Number: KM-G01



Introduction

Zirconia ceramic rods are prepared by isostatic pressing, and a uniform, dense and smooth ceramic layer and transition layer are formed at high temperature and high speed.

[Learn More](#)

0.2*100mm	0.7*100mm	1.2*100mm	2.5*100mm	8*100mm	15*115mm
0.3*100mm	0.8*100mm	1.5*100mm	3*100mm	10*100mm	16*115mm
0.4*100mm	0.9*100mm	1.6*100mm	4*100mm	12*100mm	18*115mm
0.5*100mm	1*100mm	1.8*100mm	5*100mm	13*115mm	20*115mm
0.6*100mm	1.1*100mm	2*100mm	6*100mm	14*115mm	22*200mm

Zirconia Ceramic Ball - Precision Machining

Item Number: KM-G03



Introduction

zirconia ceramic ball have the characteristics of high strength, high hardness, PPM wear level, high fracture toughness, good wear resistance, and high specific gravity.

[Learn More](#)

1mm	2.778mm	4.763mm	6.747mm	9.0mm	12.7mm	16.668mm	25.0mm	40mm
1.2mm	3.0mm	5.0mm	7.0mm	9.525mm	13.494mm	17.4625mm	25.4mm	50mm
1.5mm	3.175mm	5.556mm	7.144mm	10.0mm	14mm	18.256mm	28mm	
1.588mm	3.5mm	5.953mm	7.938mm	10.318mm	14.288mm	19.05mm	28.575mm	
2.0mm	3.969mm	6.0mm	8.0mm	11.1125mm	15.0mm	20.0mm	30.0mm	
2.381mm	4.0mm	6.35mm	8.5mm	11.509mm	15.875mm	20.638mm	35mm	
2.5mm	4.5mm	6.5mm	8.731mm	12.0mm	16.0mm	22.225mm	38.1mm	

Zirconia Ceramic Gasket - Insulating

Item Number: KM-G04



Introduction

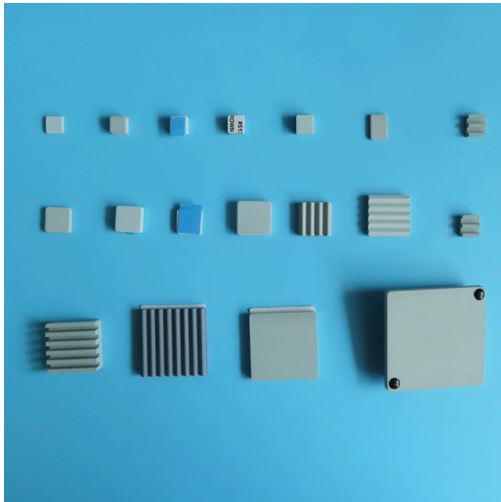
Zirconia insulating ceramic gasket has high melting point, high resistivity, low thermal expansion coefficient and other properties, making it an important high temperature resistant material, ceramic insulating material and ceramic sunscreen material.

[Learn More](#)

5*5	13*97	148*100	22*43	Disc Diameter:
40*40	43*43	60*60	77*77	19/20/21
52*52	50*80	120*100	120*120	25/26/32
10*10	110*110	150*150	100*100	65/70/38
101*101	140*70	20*20	25*50	115/160
130*130	15*10	70*60	80*75	
42*42	56*56	50*50	125*125	
55*55	112*112	158*80	196*168	

Silicon Carbide (Sic) Ceramic Sheet Flat / Corrugated Heat Sink

Item Number: KM-DT01



Introduction

Silicon carbide (sic) ceramic heat sink not only does not generate electromagnetic waves, but also can isolate electromagnetic waves and absorb part of electromagnetic waves.

[Learn More](#)

25*25*3mm	30*30*5mm	40*40*4mm	50*50*5mm
25*25*5mm	30*30*5mm	40*40*5mm	60*60*5mm
25*25*5mm	30*30*8mm	40*40*5mm	60*60*8mm
25*25*8mm	30*30*10mm	40*40*7mm	
25*25*10mm	35*35*10mm	40*40*8mm	
30*30*2.5mm	40*40*3mm	50*50*5mm	

Silicon Carbide (Sic) Ceramic Sheet Wear-Resistant

Item Number: KM-DG02



Introduction

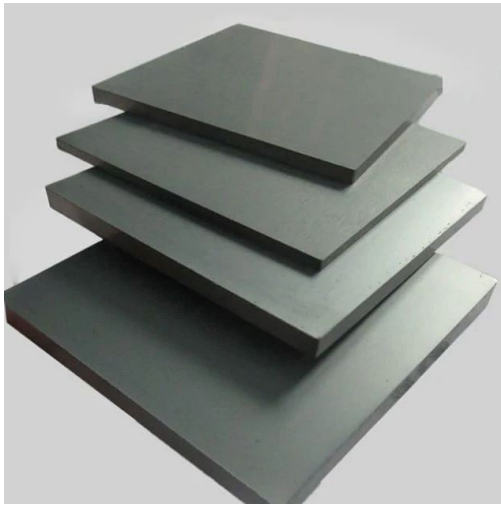
Silicon carbide (sic) ceramic sheet is composed of high-purity silicon carbide and ultra-fine powder, which is formed by vibration molding and high-temperature sintering.

[Learn More](#)

Round 15*3mm	40*40*1mm	50*50*4/5/6mm	100*100*5mm	150*150*5mm
5*5*1mm	40*40*2mm	50*50*8/10mm	100*100*7mm	15*15*1mm (one side polished)
10*10*4mm	50*50*1mm	50*50*14mm	100*100*10mm	50*50*1mm (one side polished)
20*20*3mm	50*50*2mm	100*100*3mm	100*100*15mm	
20*20*5mm	50*50*3mm	100*100*4mm	100*100*20mm	

Silicon Carbide (Sic) Ceramic Plate

Item Number: KM-DG03



Introduction

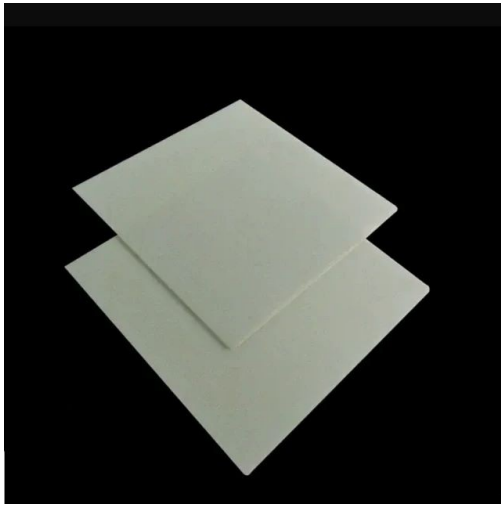
Silicon nitride (sic) ceramic is an inorganic material ceramic that does not shrink during sintering. It is a high-strength, low-density, high-temperature-resistant covalent bond compound.

[Learn More](#)

25*50*5/6mm	50*50*4/5mm	100*100*4mm	100*100*12mm	150*150*6mm
25*50*10/8mm	50*50*6/8mm	100*100*5mm	100*100*15mm	150*150*8mm
50*50*1mm	50*50*10mm	100*100*6mm	100*100*16mm	150*150*10mm
50*50*2mm	100*100*2mm	100*100*8mm	100*100*30mm	
50*50*3mm	100*100*3mm	100*100*10mm	150*150*5mm	

Silicon Nitride (Sic) Ceramic Sheet Precision Machining Ceramic

Item Number: KM-DG04



Introduction

Silicon nitride plate is a commonly used ceramic material in the metallurgical industry due to its uniform performance at high temperatures.

[Learn More](#)

10*10*0.35mm

20*20*0.35mm

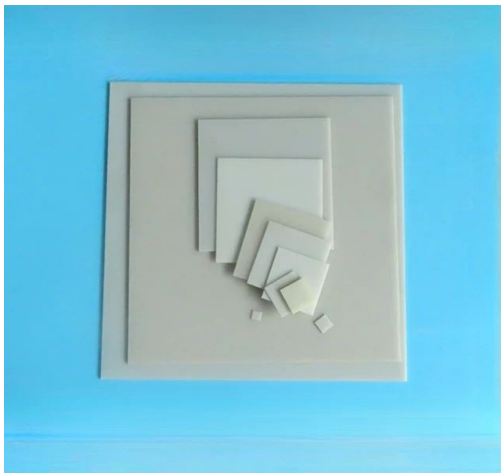
140*190*0.32mm

114*114*0.35mm

114*114*0.75mm

Aluminum Nitride (AlN) Ceramic Sheet

Item Number: KM-DG05



Introduction

Aluminum nitride (AlN) has the characteristics of good compatibility with silicon. It is not only used as a sintering aid or reinforcing phase for structural ceramics, but its performance far exceeds that of alumina.

[Learn More](#)

Product number	Product regular size (mm)	
Porous aluminum nitride ceramic sheet	14*19*1	14*19*1
	20*25*1	20*25*1
	22*28*1	22*28*1
	29*42*1	17*22*0.6
	Round140.385	
Non-porous aluminum nitride ceramic sheet	6*30*1	114*114*1
	20*25*1	127*127*1
	3.6*3.6*0.385	139*190.5*1
	10*10*1	152.4*152.4*0.6
	30*30*1	152.4*152.4*1
	40*40*1	165*165*1
	50*50*1	25*98*0.635
	1016*101.60.38	50*50*0.5
	101.6*101.6*0.635	Round31*1.2
	114*114*0.385	Round26*1
	1143*114.30.635	Round72.6*0.6
	Round15*1.5	Round45*1
	Round26*1	Round45*1.5
	Round30*1	Round50*1
	Round35*1	Round50*2
	Round40*1	Round60*1



Kintek Solution

Head Quarter: No.89 Science Avenue, High-Tech Zone,
Zhengzhou, China

Hongkong Office: 300 Lockhart Road, Wan Chai,
Hongkong

Canada Office: Boulevard Graham, Mont-Royal, QC, H3P
2C7, Canada

