



KINTEK SOLUTION

Thin Film Deposition Parts Catalog

Contact us for more catalogs of [Sample Preparation](#), [Thermal Equipment](#), [Lab Consumables & Materials](#), [Bio-Chem Equipment](#), etc...

KINTEK SOLUTION

COMPANY PROFILE

>>> About Us

Kintek Solution Ltd is one technology orientated organization, team members are devoted to probing the most efficient and reliable technology and innovations in the scientific researching equipment, fields like biochemical reacting, new materials researching, heat treatment, vacuum creating, refrigerating, as well as pharmaceutical and petroleum extracting equipment.

In the past 20 years, we earned rich experiences in this researching equipment field, we are capable to supply both the equipment and solution according to customer's needs and realities, we have also developed lots of customer tailored equipment according to a specific working purpose, and we have lots of successful projects in many universities and institutes from different countries, like Asia, Europe, North and South America, Australia and New Zealand, Middle East, and Africa.

Profession, quick response, hard working, and sincerity is a remarkable label of our team members working attitude, which earn us a sound reputation among our clients.

We are here and ready to service our clients from different countries and regions, and share the most efficient and reliable technology together!



Tungsten Evaporation Boat

Item Number: LMF-TEB



Introduction

Learn about tungsten boats, also known as evaporated or coated tungsten boats. With a high tungsten content of 99.95%, these boats are ideal for high-temperature environments and widely used in various industries. Discover their properties and applications here.

[Learn More](#)

Models	Thickness (mm)	Width (mm)	Length (mm)	Shape
#207	0.2	7	100	
#215	0.2	15	100	
#308	0.3	8	100	
#310	0.3	10	100	Round bottom / Flat bottom / Butterfly / Customizable
#315	0.3	15	100	
#413	0.4	13	50	
#525	0.5	25	78	

Molybdenum / Tungsten / Tantalum Evaporation Boat

Item Number: KME01



Introduction

Evaporation boat sources are used in thermal evaporation systems and are suitable for depositing various metals, alloys and materials. Evaporation boat sources are available in different thicknesses of tungsten, tantalum and molybdenum to ensure compatibility with a variety of power sources. As a container, it is used for vacuum evaporation of materials. They can be used for thin film deposition of various materials, or designed to be compatible with techniques such as electron beam fabrication.

[Learn More](#)

Length 100 width 8 thickness 0.2/0.3mm

Length 100 width 15 thickness 0.2/0.3/0.5mm

Length 100 width 20 thickness 0.2/0.3/0.5mm

Groove size: length 50 deep 2.6

Hemispherical Bottom Tungsten / Molybdenum Evaporation Boat

Item Number: KME-YD



Introduction

Used for gold plating, silver plating, platinum, palladium, suitable for a small amount of thin film materials. Reduce the waste of film materials and reduce heat dissipation.

[Learn More](#)

Folding Molybdenum Boat / Tantalum Boat With Or Without Cover

Item Number: KME-ZDZ



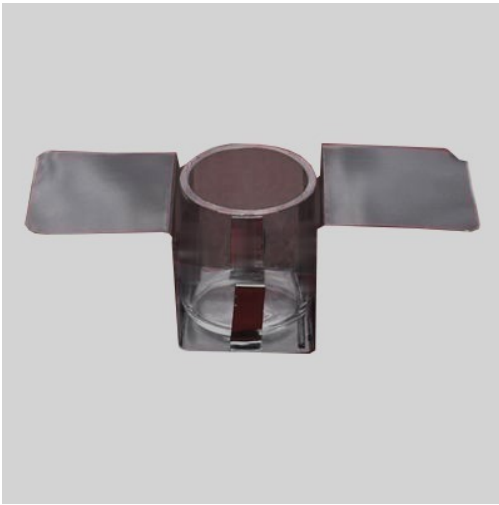
Introduction

Molybdenum boat is an important carrier for preparing molybdenum powder and other metal powders, with high density, melting point, strength and temperature resistance.

[Learn More](#)

Evaporation Boat For Organic Matter

Item Number: KME-YJ



Introduction

The evaporation boat for organic matter is an important tool for precise and uniform heating during the deposition of organic materials.

[Learn More](#)

Evaporation Crucible For Organic Matter

Item Number: KME-YJG



Introduction

An evaporation crucible for organic matter, referred to as an evaporation crucible, is a container for evaporating organic solvents in a laboratory environment.

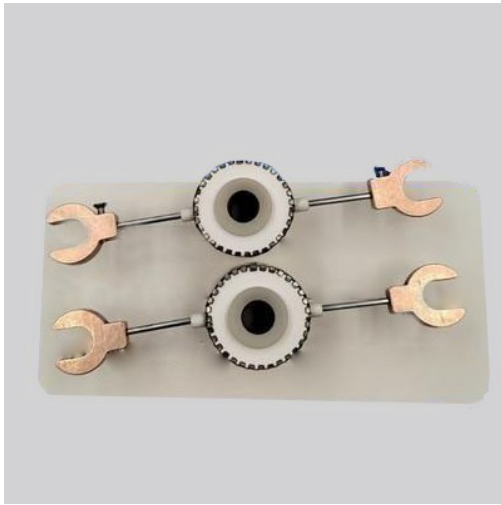
[Learn More](#)

crucible size

13*13mm / 18*20mm / 25.4*30mm / 25.4*30mm / 10*25mm

Aluminized Ceramic Evaporation Boat

Item Number: KME-DL



Introduction

Vessel for depositing thin films; has an aluminum-coated ceramic body for improved thermal efficiency and chemical resistance, making it suitable for various applications.

[Learn More](#)

Graphite Evaporation Crucible

Item Number: KME07



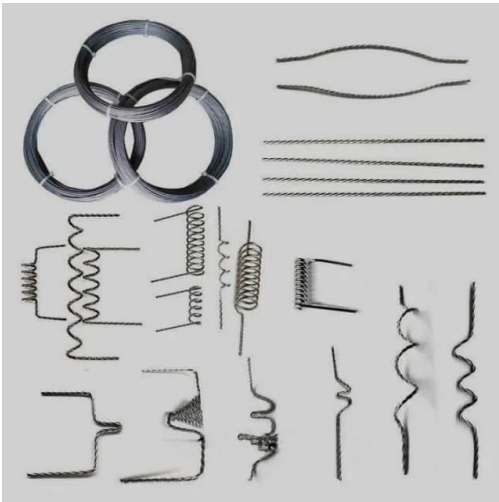
Introduction

Vessels for high temperature applications, where materials are kept at extremely high temperatures to evaporate, allowing thin films to be deposited on substrates.

[Learn More](#)

Thermally Evaporated Tungsten Wire

Item Number: KME08



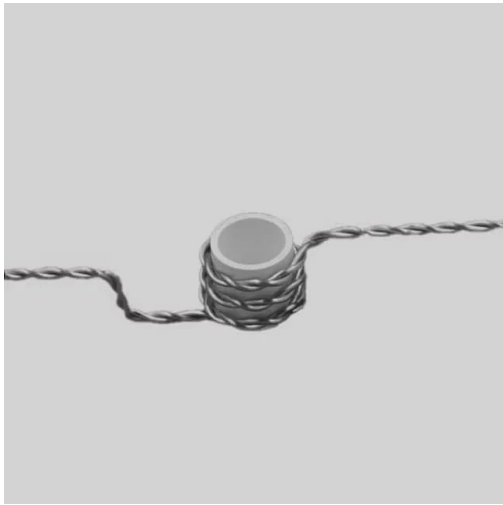
Introduction

It has a high melting point, thermal and electrical conductivity, and corrosion resistance. It is a valuable material for high temperature, vacuum and other industries.

[Learn More](#)

Ceramic Evaporation Boat Set

Item Number: KME09



Introduction

It can be used for vapor deposition of various metals and alloys. Most metals can be evaporated completely without loss. Evaporation baskets are reusable.1

[Learn More](#)

Material	ceramic crucible / tungsten wire
Ceramic Crucible Size	0.25ml / 0.5ml / 1.0ml / 2.0ml / 3.0ml
Tungsten Wire Size	3*0.8 wire / 3*1.0 wire / 3*0.8 wire

Electron Gun Beam Crucible

Item Number: KES01



Introduction

In the context of electron gun beam evaporation, a crucible is a container or source holder used to contain and evaporate the material to be deposited onto a substrate.

[Learn More](#)

product	Molybdenum/Tungsten Crucible	Boron Nitride Crucible/Conductive Boron Nitride Crucible	Graphite Crucible/Coated Graphite Crucible	Pyrolytic Graphite Coated Crucibles	Nickel crucible	Titanium crucible	copper crucible	Alumina crucible
Specification	4CC / 7CC / 15CC / 25CC / 40CC	4CC / 7CC / 15CC / 25CC / 40CC	4CC / 7CC / 15CC / 25CC / 40CC	4CC / 7CC	4CC	4CC	4CC / 2CC / 40CC	4CC

Electron Beam Evaporation Graphite Crucible

Item Number: KMS02



Introduction

A technology mainly used in the field of power electronics. It is a graphite film made of carbon source material by material deposition using electron beam technology.

[Learn More](#)

Graphite Crucible Dimensions	35*17mm	35*22mm	40*20mm	42.5*19.5mm	45*22.5mm	50*25mm	65*30mm
------------------------------	---------	---------	---------	-------------	-----------	---------	---------

Electron Beam Evaporation Coating Conductive Boron Nitride Crucible (Bn Crucible)

Item Number: KES03



Introduction

High-purity and smooth conductive boron nitride crucible for electron beam evaporation coating, with high temperature and thermal cycling performance.

[Learn More](#)

Outer diameter	35mm	40mm	45mm	50mm	64.5mm
High	17mm	20mm	22.5mm	25mm	35mm

Electron Beam Evaporation Coating Tungsten Crucible / Molybdenum Crucible

Item Number: KMS04



Introduction

Tungsten and molybdenum crucibles are commonly used in electron beam evaporation processes due to their excellent thermal and mechanical properties.

[Learn More](#)

Outer diameter & High	30*15mm	34*20mm	35*17mm	40*17mm	42*19mm	45*22mm	50mm*22
-----------------------	---------	---------	---------	---------	---------	---------	---------

Electron Beam Evaporation Coating / Gold Plating / Tungsten Crucible / Molybdenum Crucible

Item Number: KMS05



Introduction

These crucibles act as containers for the gold material evaporated by the electron evaporation beam while precisely directing the electron beam for precise deposition.

[Learn More](#)

Molybdenum outer diameter & High	28*13.2mm	35*17mm	40*20mm	42*20mm	45*22mm	50*25mm
Tungsten outer diameter & High	28*13mm	35*17mm	40*19mm	42*20mm	45*22mm	50*25mm

Electron Beam Evaporation Coating Oxygen-Free Copper Crucible

Item Number: KMS06



Introduction

Electron Beam Evaporation Coating Oxygen-Free Copper Crucible enables precise co-deposition of various materials. Its controlled temperature and water-cooled design ensure pure and efficient thin film deposition.

[Learn More](#)

Outer diameter & High	35*17mm	40*17mm	45*22mm	50*25mm
-----------------------	---------	---------	---------	---------

Boron Nitride (Bn) Crucible - Phosphorous Powder Sintered

Item Number: KM-D01



Introduction

Phosphorus powder sintered boron nitride (BN) crucible has a smooth surface, dense, pollution-free and long service life.

[Learn More](#)

Capacity and size (inner and outer diameter and height)

- 2ml(16*12*20mm)
- 3ml(20*16*18mm)
- 5ml(24*20*22mm)
- 10ml(28*24*30mm)
- 20ml(32*26*32mm)
- 50ml(47*41*45mm)
- 100ml(58*50*58mm)

Hexagonal Boron Nitride(Hbn) Thermocouple Protection Tube

Item Number: KM-D02



Introduction

Hexagonal boron nitride ceramics is an emerging industrial material. Because of its similar structure to graphite and many similarities in performance, it is also called "white graphite".

[Learn More](#)

Hexagonal Boron Nitride (Hbn) Spacer - Cam Profile And Various Spacer Types

Item Number: KE-D3



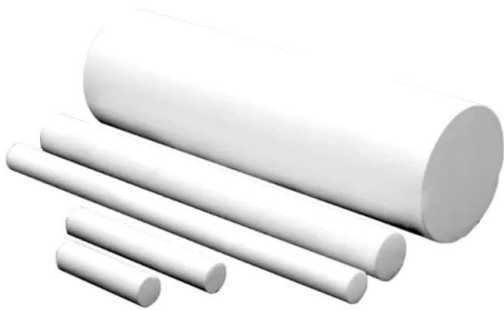
Introduction

Hexagonal boron nitride (HBN) gaskets are made from hot-pressed boron nitride blanks. Mechanical properties similar to graphite, but with excellent electrical resistance.

[Learn More](#)

Boron Nitride (Bn) Ceramic Rod

Item Number: KM-D4



Introduction

Boron nitride (BN) rod is the strongest boron nitride crystal form like graphite, which has excellent electrical insulation, chemical stability and dielectric properties.

[Learn More](#)

diameter and length

10-100mm*100-300mm

Boron Nitride (Bn) Ceramic Tube

Item Number: KM-D5



Introduction

Boron nitride (BN) is known for its high thermal stability, excellent electrical insulating properties and lubricating properties.

[Learn More](#)

Hexagonal Boron Nitride (Hbn) Ceramic Ring

Item Number: KM-D6



Introduction

Boron nitride ceramic (BN) rings are commonly used in high temperature applications such as furnace fixtures, heat exchangers and semiconductor processing.

[Learn More](#)

Boron Nitride (Bn) Ceramic Plate

Item Number: KM-D7



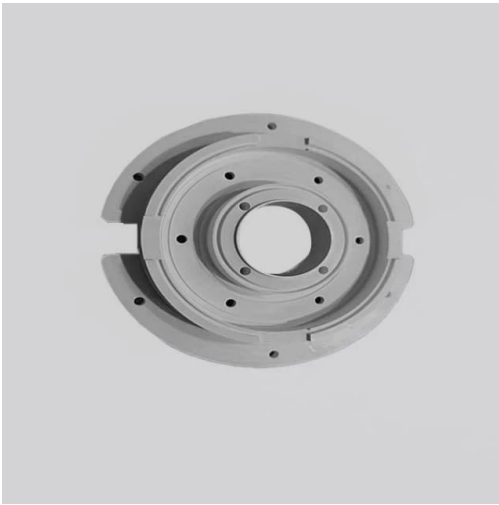
Introduction

Boron nitride (BN) ceramic plates do not use aluminum water to wet, and can provide comprehensive protection for the surface of materials that directly contact molten aluminum, magnesium, zinc alloys and their slag.

[Learn More](#)

Boron Nitride (Bn) Ceramic Custom Parts

Item Number: KM-D8



Introduction

Boron nitride (BN) ceramics can have different shapes, so they can be manufactured to generate high temperature, high pressure, insulation and heat dissipation to avoid neutron radiation.

[Learn More](#)

Boron Nitride (Bn) Ceramics-Conductive Composite

Item Number: KM-D9



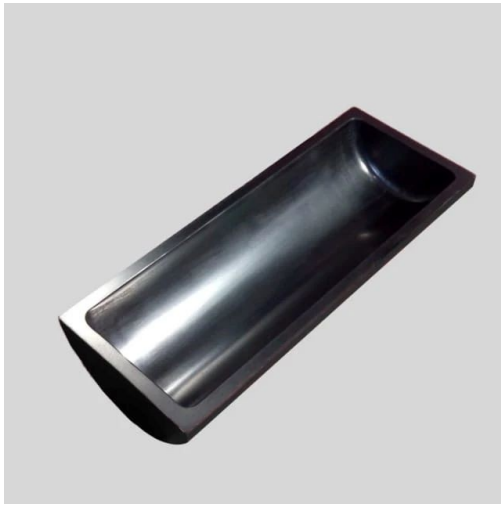
Introduction

Due to the characteristics of boron nitride itself, the dielectric constant and dielectric loss are very small, so it is an ideal electrical insulating material.

[Learn More](#)

Carbon Graphite Boat -Laboratory Tube Furnace With Cover

Item Number: KM-D10



Introduction

Covered Carbon Graphite Boat Laboratory Tube Furnaces are specialized vessels or vessels made of graphite material designed to withstand extreme high temperatures and chemically aggressive environments.

[Learn More](#)

diameter / height / length / thickness

35*18*100*3.5mm

45*150*23*5mm

Carbon Graphite Plate - Isostatic

Item Number: KM-D11



Introduction

[Learn More](#)

thickness / width / length

1-50*100*100mm

Molybdenum/Tungsten/Tantalum Evaporation Boat - Special Shape

Item Number: KME01-2



Introduction

Tungsten Evaporation Boat is ideal for vacuum coating industry and sintering furnace or vacuum annealing. we offers tungsten evaporation boats that are designed to be durable and robust, with long operating lifetimes and to ensure consistent smooth and even spreading of the molten metals.

[Learn More](#)



Kintek Solution

Head Quarter: No.89 Science Avenue, High-Tech Zone,
Zhengzhou, China

Hongkong Office: 300 Lockhart Road, Wan Chai,
Hongkong

Canada Office: Boulevard Graham, Mont-Royal, QC, H3P
2C7, Canada

